
Enabling GUI Scripting

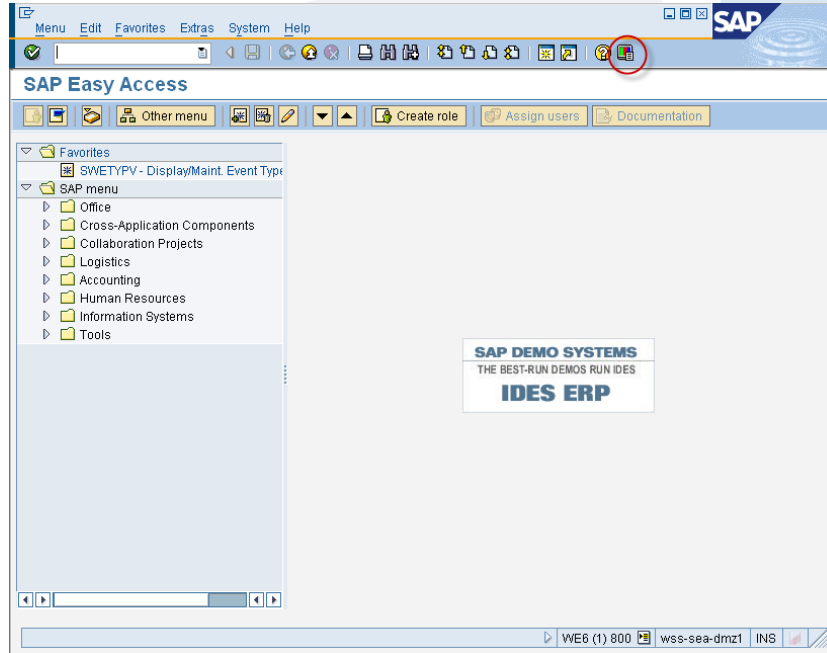
Winshuttle, Inc.
Bothell, WA USA
+ 1 (800) 711-9798
www.winshuttle.com



To use GUI Scripting with Winshuttle TRANSACTION™, GUI scripting must be enabled in the SAP GUI and have the parameter set in RZ11. Typically, Basis has to enable the parameter setting and users will have to enable it on their SAP GUI.

Enabling in SAP GUI

Go to Customize Local Layout.

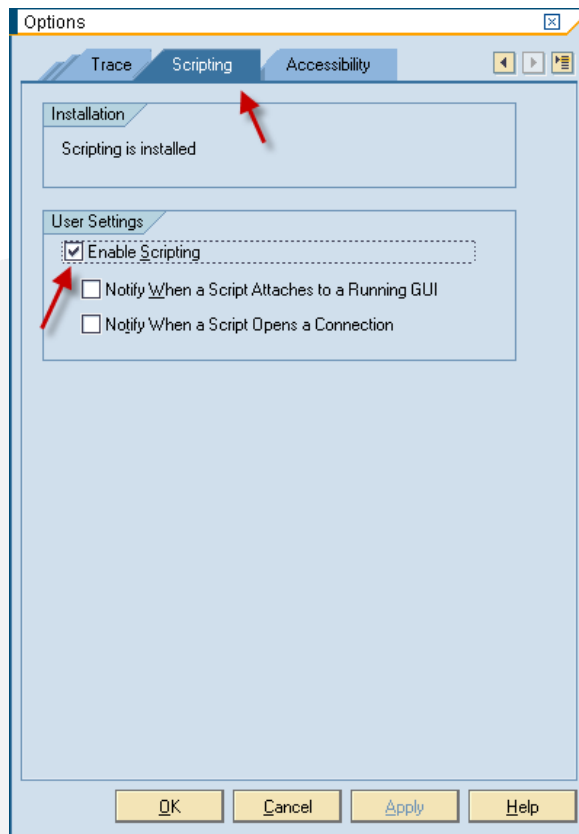


Go to Options.

Choose Options.



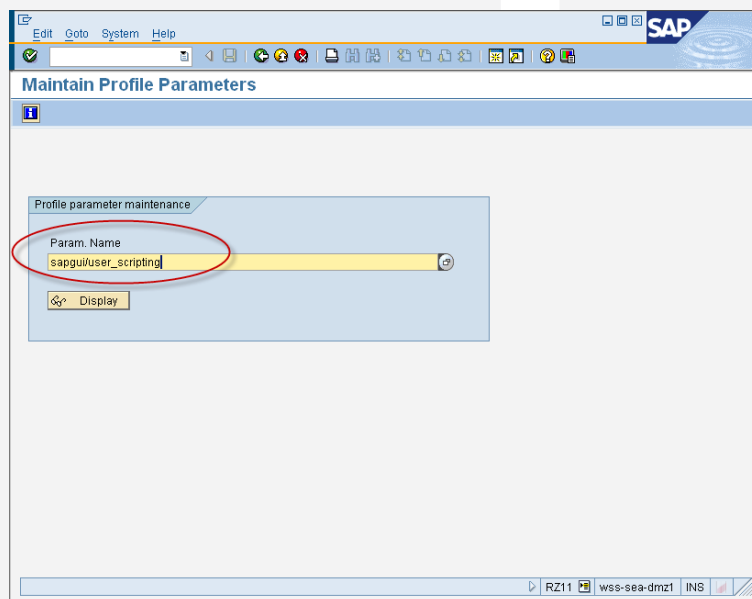
Navigate to the Scripting tab and check Enable Scripting.



Enabling GUI Scripting Parameter

Go to transaction RZ11.

Enter in sapgui/user_scripting.



Click on Change Value and Enter in TRUE for new value and save.

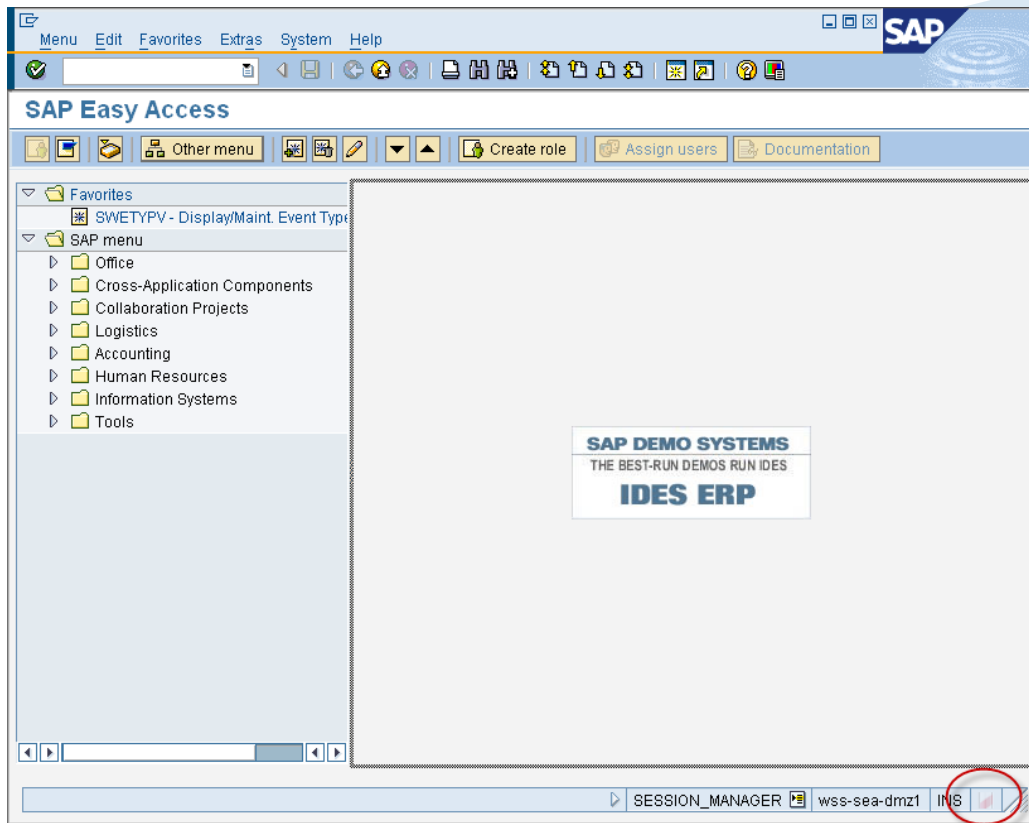
The screenshot shows the SAP 'Display Profile Parameter Attributes' dialog. The 'Change Value' button is highlighted with a red arrow. A sub-dialog titled 'Change Parameter Value' is open, showing the 'Parameter values' section. The 'New value' field is highlighted in yellow and contains the text 'TRUE', which is also circled in red. Other fields in the sub-dialog include 'Param. Name' (sagui/user_scripting), 'Dflt value' (FALSE), 'ProfileVal' (FALSE), and 'Current value' (TRUE). A checkbox for 'Switch on all servers' is also visible.

The screenshot shows the 'Display Profile Parameter Attributes' dialog with the 'Change Value' button highlighted. The main dialog displays the following details for the parameter 'sagui/user_scripting':

Param. Name:	sagui/user_scripting
Short description(Engl)	Enable or disable user scripting on the frontend.
Appl. area	GUI Frontend
ParameterTyp	Logical value
Changes allowed	Change permitted
Valid for oper. system	All operating systems
DynamicallySwitchable	<input checked="" type="checkbox"/>
Same on all servers	<input type="checkbox"/>
Dflt value	FALSE
ProfileVal	FALSE
Current value	TRUE
Switched from	MARCR 09/09/2008 10:02:53

The status bar at the bottom indicates 'Action canceled'.

An image of a 'barber pole' in the lower right hand corner signifies that GUI scripting is enabled.



Winshuttle, Inc. provides software products that enable business users to work with SAP directly from Excel, Web forms and other interfaces without any programming. SAP users often struggle to effectively run the complex business processes supported by SAP. Winshuttle solves this problem by offering familiar interfaces to SAP, which improves productivity and saves customers significant time and money. Winshuttle's suite of solutions work with all SAP modules, enabling both business and IT users to solve any SAP data or business process challenge by securely expanding SAP interactions to both employees and partners. Hundreds of global customers use Winshuttle to make their SAP lives easier. For more information, visit www.winshuttle.com.

Corporate Headquarters

Bothell, WA USA
 Tel + 1 (800) 711-9798
 Fax +1 (425) 527-6666
www.winshuttle.com

United Kingdom

London, U.K.
 Tel +44 (0) 208 704 4170
 Fax +44 (0) 208 711 2665
www.winshuttle.co.uk

France

Maisons-Alfort, France
 Tel +33 (0) 148 937 171
 Fax +33 (0) 143 68 37 68
www.winshuttle.fr

Germany

Bremerhaven, Germany
 Tel +49 (0) 471 1701900
 Fax +49 (0) 471 1701902
www.winshuttle-software.de

India

Research & Development
 Chandigarh, India
 Tel +91 (0) 172 465 5941
www.winshuttle.in