

Data Management for SAP

10 May 2017

WINSHUTTLE®

Copyright Winshuttle 2017



Chris Town

Sales Director, EMEA/APAC

London, UK



Divya Kaiwar

Principal Solutions Engineer

London, UK

Digital Transformation



Big Data

Self-Service IT



Real-Time Analytics/Data

DATA
is becoming
a strategic asset
managed by the
business

“ By 2019, 90% of large organizations will have a **Chief Data Officer.**

Only 50% will be hailed a success.

Gartner[®]

The digital winners of tomorrow



Confidence and
trust in data



Shortened
business cycles



Empowered
business teams

3 critical success factors of Data Management



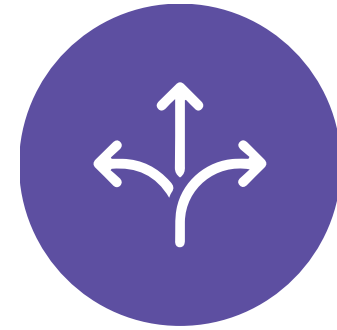
Quality

Avoid costly business interruptions



Speed

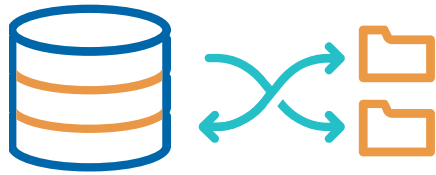
Don't delay critical business activities



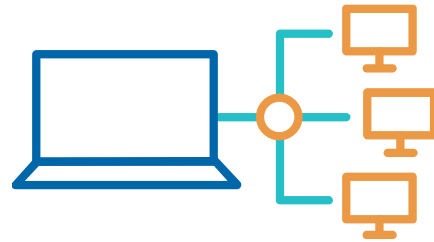
Flexibility

Make continuous improvements

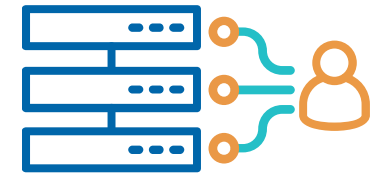
3 critical success factors of Data Management



**Data
Movement**



**Workflow
Applications**



**Data
Governance**

WINSHUTTLE®



Winshuttle Solution Demo

Today's Examples



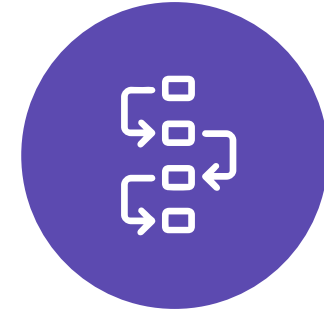
Mass Data Creation

- ✓ Transactional Data
 - ✓ Journal Upload (Multiline)



Mass Data Maintenance

- ✓ Roundtrip
 - ✓ Salary Update



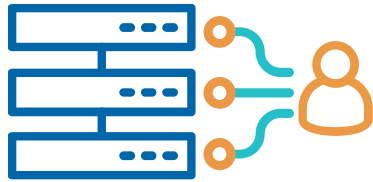
Forms & Workflow

- ✓ Customer Master
 - ✓ Web Form
 - ✓ Automated Workflow
 - ✓ SAP Integration



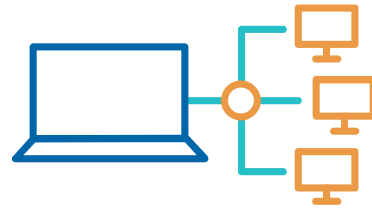
Demonstration

Key Takeaways

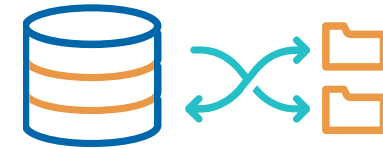


**Improved Data
Validation**

**Improved User
Productivity**



**Transparent and
Repeatable Process**



**Process Control
Process Flexibility**

Automate business processes



Order-to-Cash



Hire-to-Retire



Record-to-Report



Procure-to-Pay



Master Data
Management

Use Winshuttle across SAP ECC



Financial
Accounting and
Controlling



Materials
Management



Sales and
Distribution



Plant
Maintenance



Production
Planning

About Winshuttle



Microsoft Partner
Gold Application Development
Gold Collaboration and Content

SAP® Certified
Integration with SAP® S/4HANA, on-premise edition



Founded in 2003

99%

Customer Satisfaction



Award Winning



Upcoming webinars...



Automate Seasonal Pricing
Updates



SAP S/4HANA & Seamless
Data Migrations

www.winshuttle.com/events/webinars

The background features a dark blue and black color scheme with a grid of dashed white lines. Overlaid on this are several semi-transparent financial charts, including a candlestick chart and a line graph with data points, suggesting a business or investment theme.

Thank you

Visit winshuttle.com for more information.

WINSHUTTLE®